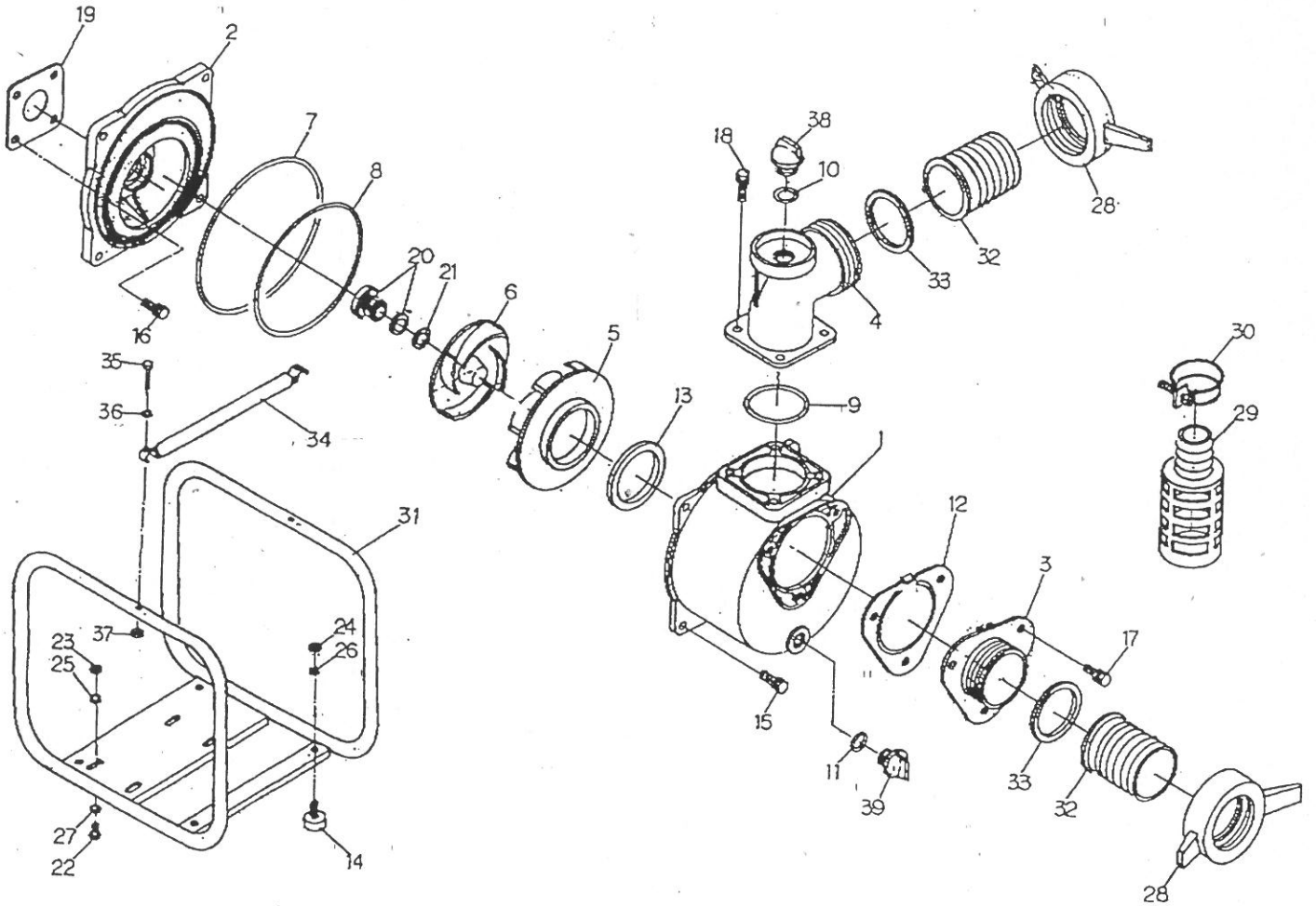


# EXPLODED VIEW

MODEL : **MP80**



# MP80

REF.	CODE NO.	NAME	QTY	REMARKS
1	1960-100010	CASING	1	ADC
2	1960-100020	CASING COVER	1	ADC
3	1960-100160	SUCTION COVER	1	ADC
4	4328-100090	DELIVERY ELBOW	1	ADC
5	1960-100130	1960-000130 VOLUTE CASING	1	ADC
6	1960-000030	IMPELLER	1	FC
7	048931-2100	O-RING, CASING	1	NBR
8	048924-1540	O-RING, V. CASING	1	NBR
9	048131-0750	O-RING, D. ELBOW	1	NBR
10	048035-0300R	O-RING, F. CAP	1	NBR
11	048131-0250	O-RING, D. CAP	1	NBR
12	1960-350350	CHECK VALVE	1	NBR
13	1378-330620	PACKING, V. CASING	1	NBR
14	072332-2030R	CUSHION RUBBER	4	NBR
15	018105-1030	BOLT W/WASHER	4	
16	018105-0820	BOLT W/WASHER	4	
17	018105-1025	BOLT W/WASHER	3	
18	018105-0825	BOLT W/WASHER	4	
19	1211-390610R	PACKING, C. COVER	1	
20	080811-2320	MECHANICAL SEAL	1	
21	085283-2018	ADJUST LINER	1-3	BSP
22	010505-0640	BOLT	4	
23	020545-0080	NUT	4	
24	020545-0060R	NUT	4	
25	045125-0080	SPRING WASHER	4	
26	045125-0060R	SPRING WASHER	4	
27	040145-0080	WASHER	4	
28	074111-1080	HOSE COUPLING	2	ADC
29	074230-7050	STRAINER	1	PE
30	093225-3000	WIRE HOSE BAND	3	SWRM
31	1960-214010R	BASE	1	
32	074124-1080	HOSE JOINT	2	ADC
33	074132-0801	PACKING, H. COUPLING	2	NBR
34	1960-20424R	PIPE BAR	1	
35	010505-0630R	BOLT	2	
36	045125-0060R	SPRING WASHER	2	SWRM
37	020545-0060R	NUT	2	
38	063121-1100R	FLOODING CAP	1	ABS
39	063121-1060	DRAIN CAP	1	ABS